

GUIDE TO COAL MINES

Mines Served by BNSF Railway

The information included in this *Guide to Coal Mines* was provided by the coal producing companies. It includes general information about coal and the mine facilities, ranging from coal specifications to loading characteristics. Production volumes are from the Mine Safety and Health Administration (MSHA). Producer websites are provided for additional information.

Produced and Published by
Coal Business Unit
BNSF Railway
Fort Worth, Texas 76161-0051
April 21, 2010

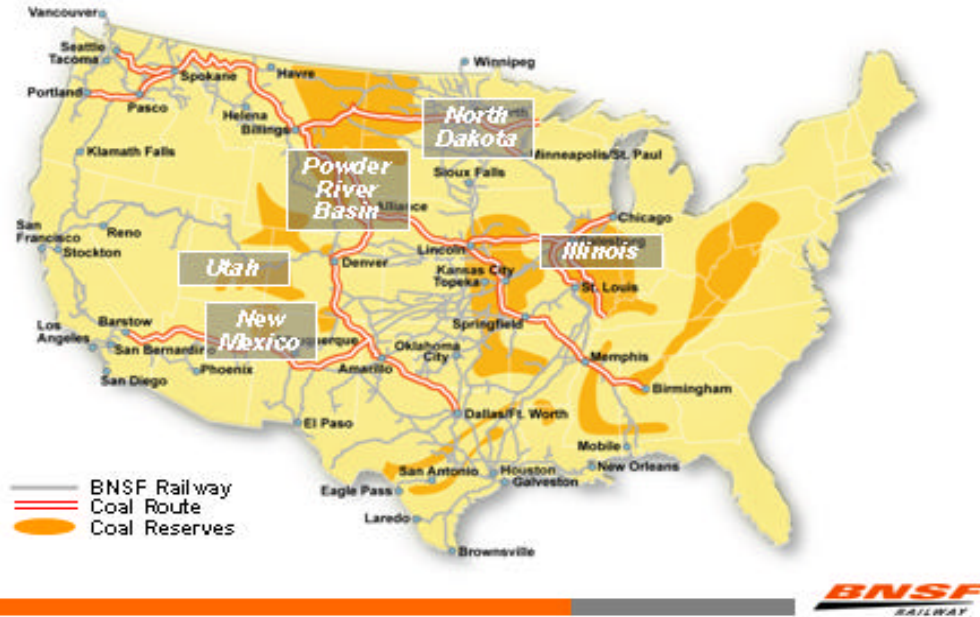
TABLE OF CONTENTS

US Map.....	1
<u>WYOMING</u>	
Wyoming Map.....	2
Antelope Mine.....	3
Belle Ayr Mine.....	4
Black Thunder Mine.....	5
Buckskin Mine.....	6
Caballo Mine.....	7
Clovis Point loadout (Wyodak).....	8
Coal Creek.....	9
Cordero Rojo Mine.....	10
Dry Fork Mine.....	11
Eagle Butte Mine.....	12
East Thunder Mine.....	13
North Antelope Rochelle Mine.....	14
Rawhide Mine.....	15
<u>MONTANA</u>	
Montana Map.....	16
Absaloka Mine.....	17
Decker Mine.....	18
Rosebud Mine.....	19
Signal Peak Mine.....	20
Spring Creek Mine.....	21
<u>NEW MEXICO</u>	
New Mexico Map.....	22
Lee Ranch Mine.....	23
El Segundo Mine.....	24
<u>ILLINOIS</u>	
Illinois Map.....	25
<u>NORTH DAKOTA</u>	
North Dakota Map.....	26
Beulah Mine.....	27
Freedom Mine.....	28
<u>UTAH</u>	
Utah Map.....	29
Bear Canyon Mine.....	30
Deer Creek Mine.....	31
Dugout Canyon.....	32
Horizon Mine.....	33
SUFCO Mine.....	34
West Ridge Mine.....	35
Mine Index.....	36
Mine Owner Index.....	37

Coal Mine Guide

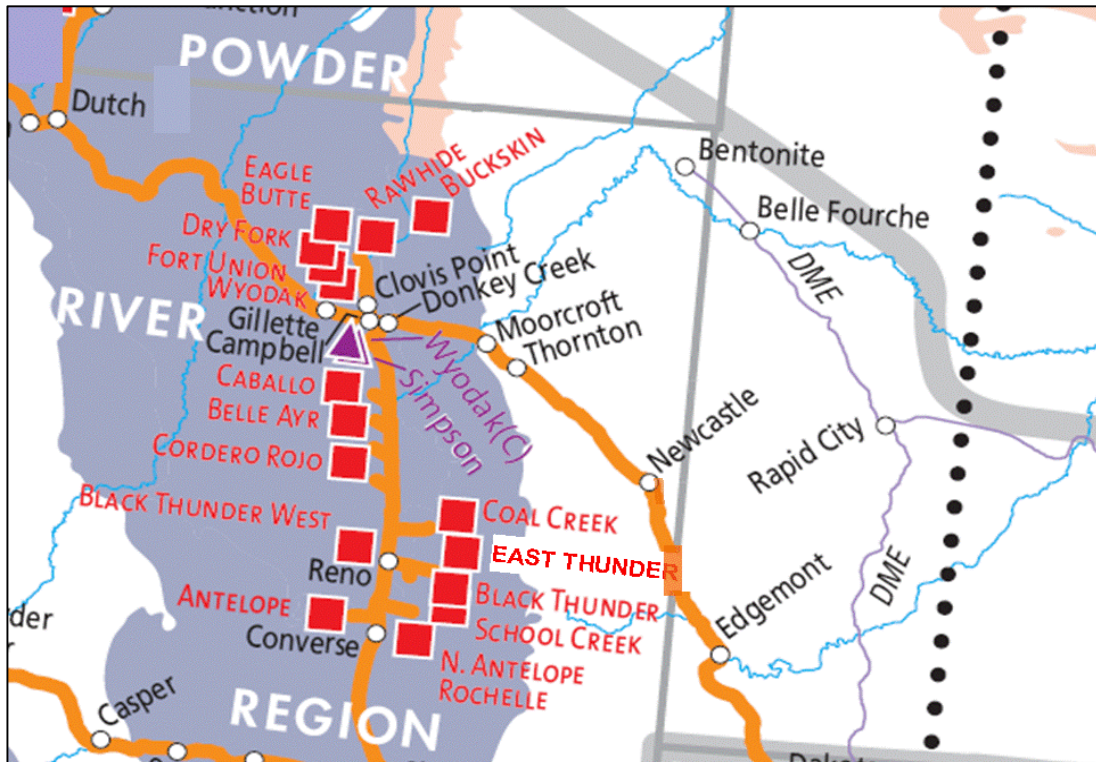
The United States has the largest coal reserves in the world. The abundant supply of coal has made it a reliable and economical fuel source for steam-generated electricity. Coal is used to supply more than half of the electricity of the United States

BNSF Network and Coal Reserves



WYOMING

Wyoming has about 25 billion tons of compliance reserves. Coal underlies over half the state covering 53,000 square miles. Nearly 40% of all U.S. steam coal is produced in Wyoming.



Antelope Mine - Cloud Peak Energy

Page 3

Type of Mine	Surface										
Loading Station	Converse Jct., Wyoming (Converse County) 70 miles southeast of Gillette, Wyoming										
Marketing Contact	http://www.cloudpeakenergy.com/										
Coal Specifications	<table><thead><tr><th>Proximate Analysis</th><th>Typical</th></tr></thead><tbody><tr><td>Btu/lb.</td><td>8,800</td></tr><tr><td>Sulfur</td><td>0.24%</td></tr><tr><td>Ash</td><td>5.25%</td></tr><tr><td>Sodium as % of Ash</td><td>1.64%</td></tr></tbody></table>	Proximate Analysis	Typical	Btu/lb.	8,800	Sulfur	0.24%	Ash	5.25%	Sodium as % of Ash	1.64%
Proximate Analysis	Typical										
Btu/lb.	8,800										
Sulfur	0.24%										
Ash	5.25%										
Sodium as % of Ash	1.64%										
Annual Production	Permitted for 42 million tons per year 2007 – 34.5 million tons 2008 – 35.8 million tons 2009 – 34.0 million tons										
Storage Capacity	27,500 tons total (2 silos)										
Loading & Weighing	Batch weigh bin coupled with weigh-in-motion track scale Single loading loop										
Track Configuration	Capable of holding 5 unit trains on site										

Belle Ayr Mine - Alpha Natural Resources

Page 4

Type of Mine	Surface	
Loading Station	Belle Ayr, Wyoming (Campbell County) 18 miles southeast of Gillette, Wyoming	
Marketing Contact	http://www.alphanr.com/Pages/Default.aspx	
Coal Specifications	Proximate Analysis	Typical
	Btu/lb.	8,550
	Sulfur	0.33%
	Ash	4.50%
	Sodium as % of Ash	1.90%
Recoverable Reserves	406 million tons	
Annual Production	Permitted for 45 million tons per year	
	2007 – 26.6 million tons	
	2008 – 28.7 million tons	
	2009 – 28.4 million tons	
Storage Capacity	48,000 tons total (4 silos)	
Loading & Weighing	Batch weigh bin coupled with weigh-in-motion track scale	
	Single loading loop	
Track Configuration	Capable of holding 5 unit trains on site	

Black Thunder Mine and West Thunder Loadout - Arch Coal

Type of Mine	Surface	
Loading Station	North: Thunder Jct., Wyoming (Campbell County) West: West Thunder Jct., Wyoming (Campbell County) 45 miles southeast of Gillette, Wyoming	
Marketing Contact	http://www.archcoal.com/aboutus/ourmines.aspx	
Coal Specifications	Proximate Analysis	Typical
	Btu/lb.	8,800
	Sulfur	0.30%
	Ash	5.50%
	Sodium as % of Ash	1.30%
Recoverable Reserves	1.7 billion tons	
Annual Production	Permitted for 125 million tons per year 2007 – 86.2 million tons 2008 – 88.6 million tons 2009 – 72.1 million tons *	
Storage Capacity	North: 176,000 tons total (2 silos and slot storage) West: 35,000 tons total (2 silos)	
Loading & Weighing	North: Batch weigh bins coupled with weigh-in-motion track scales Two loading loops West: Batch weigh bin coupled with weigh-in-motion track scale Single loading loop	
Track Configuration	North: Capable of holding 11 unit trains on site West: Capable of holding 5 unit trains on site	

* also see East Thunder Mine

Buckskin Mine - Kiewit Mining Group

Page 6

Type of Mine	Surface	
Loading Station	Buckskin Jct., Wyoming (Campbell County) 10 miles northeast of Gillette, Wyoming	
Marketing Contact	http://www.kiewit.com/districts/kiewit-mining-group/overview.aspx	
Coal Specifications	Proximate Analysis	Typical
	Btu/lb.	8,400
	Sulfur	0.3%
	Ash	5.0%
	Sodium as % of Ash	1.8%
Recoverable Reserves	450 million tons	
Annual Production	Loading capacity, 27 million tons per year	
	2007 – 25.3 million tons	
	2008 – 26.1 million tons	
	2009 – 25.4 million tons	
Storage Capacity	61,500 tons total (5 silos)	
Loading & Weighing	Batch weigh bin coupled with weigh-in-motion track scale	
	Single loading loop	
Track Configuration	Capable of holding 3 unit trains on site	

Caballo Mine - Peabody Energy

Page 7

Type of Mine	Surface	
Loading Station	Caballo Jct., Wyoming 20 miles southeast of Gillette, Wyoming	
Marketing Contact	http://www.PeabodyEnergy.com	
Coal Specifications	Proximate Analysis	Typical
	Btu/lb.	8,500
	Sulfur	0.34%
	Ash	5.1%
	Sodium as % of Ash	1.40%
Recoverable Reserves	867 million tons	
Annual Production	Permitted for 50 million tons per year	
	2007 – 31.2 million tons	
	2008 – 31.2 million tons	
	2009 – 23.3 million tons	
Storage Capacity	46,000 tons total (4 silos)	
Loading & Weighing	Flood loading coupled with weigh-in-motion track scales and top-off system	
	Two loading loops	
Track Configuration	Capable of holding 5 unit trains on site	

Clovis Point Loadout - Wyodak Resources

Page 8

Type of Mine	Surface	
Loading Station	Clovis Point Jct., Wyoming (Campbell County) 8 miles east of Gillette, Wyoming	
Marketing Contact	Jack Clary (307) 682-3410 Ext. 112 J.Clary@blackhillscorp.com	
Coal Specifications	Proximate Analysis	Typical
	Btu/lb.	8,050
	Sulfur	0.4%
	Ash	6.0%
	Sodium as % of Ash	-0.94%
Recoverable Reserves	294 million tons	
Annual Production	Permitted for 10 million tons per year 2007 – 1.3 million tons 2008 – 1.8 million tons 2009 – 1.7 million tons	
Storage Capacity	24,000 tons total (slot storage)	
Loading & Weighing	Flood loading coupled with weigh-in-motion track scales Single loading loop	
Track Configuration	Capable of holding 1 unit train on site	

Coal Creek Mine - Arch Coal

Page 9

Type of Mine	Surface	
Loading Station	Coal Creek Jct., Wyoming (Campbell County) 28 miles southeast of Gillette, Wyoming	
Marketing Contact	http://www.archcoal.com/aboutus/ourmines.aspx	
Coal Specifications	Proximate Analysis	Typical
	Btu/lb.	8,325
	Sulfur	0.3%
	Ash	6.0%
	Sodium as % of Ash	1.0%
Recoverable Reserves	206.1 million tons	
Annual Production	Permitted for 50 million tons per year	
	2007 – 10.2 million tons	
	2008 – 11.5 million tons	
	2009– 9.8 million tons	
Storage Capacity	25,000 tons total (2 silos)	
Loading & Weighing	Batch weigh bin coupled with weigh-in-motion track scale	
	Single loading loop	
Track Configuration	Capable of holding 2 unit trains on site	

Cordero Rojo Mine - Cloud Peak Energy

Type of Mine	Surface	
Loading Stations	North: Rojo Jct, Wyoming (Campbell County) South: Cordero Jct, Wyoming (Campbell County) 25 miles southeast of Gillette, Wyoming	
Marketing Contact	http://www.cloudpeakenergy.com/	
Coal Specifications	Proximate Analysis	Typical
	Btu/lb.	8,400
	Sulfur	0.34%
	Ash	5.4%
	Sodium as % of Ash	1.4%
Annual Production	Permitted for 65 million tons per year 2007 – 40.5 million tons 2008 – 40.0 million tons 2009 – 39.4 million tons	
Storage Capacity	North: 28,000 tons total (2 silos) South: 144,000 tons total (4 silos plus slot storage)	
Loading & Weighing	North: Batch weigh bin coupled with weigh-in-motion track scale Two loading loops South: Batch weigh bin coupled with weigh-in-motion track scale Two loading loops	
Track Configuration	North: Capable of holding 4 unit trains on site South: Capable of holding 3 unit trains on site	

Dry Fork Mine - Western Fuels - Wyoming

Page 11

Type of Mine	Surface	
Loading Station	Dry Fork Jct., Wyoming (Campbell County) 15 miles northeast of Gillette, Wyoming	
Marketing Contact	http://www.westernfuels.org/index.cfm	
Coal Specifications	Proximate Analysis	Typical
	Btu/lb.	8,050 - 8,200
	Sulfur	0.21 - 0.42%
	Ash	3.8 - 5.1%
	Sodium as % of Ash	1.5%
Recoverable Reserves	330 million tons	
Annual Production	Permitted for 15 million tons per year	
	2007 – 5.3 million tons	
	2008 – 5.3 million tons	
	2009 – 5.2 million tons	
Loading & Weighing	Batch weigh bin coupled with weigh-in-motion track scale Single loading loop	
Track Configuration	Capable of holding 1 unit train on site	

Eagle Butte Mine - Alpha Natural Resources

Page 12

Type of Mine	Surface	
Loading Station	Eagle Jct., Wyoming (Campbell County) 8 miles northeast of Gillette, Wyoming	
Marketing Contact	http://www.alphanr.com/Pages/Default.aspx	
Coal Specifications	Proximate Analysis	Typical
	Btu/lb.	8,400
	Sulfur	0.34%
	Ash	4.5%
	Sodium as % of Ash	1.9%
Recoverable Reserves	471 million tons	
Annual Production	Permitted for 35 million tons per year	
	2007 – 25.0 million tons	
	2008 – 20.4 million tons	
	2009 – 21.52 million tons	
Storage Capacity	48,000 tons total (4 silos)	
Loading & Weighing	Batch weigh bin coupled with weigh-in-motion track scale	
	Single loading loop	
Track Configuration	Capable of holding 5 unit trains on site	

East Thunder Mine - Arch Coal

Type of Mine	Surface	
Loading Station	Thunder Jct East., Wyoming 50 miles southeast of Gillette, Wyoming	
Marketing Contact	http://www.archcoal.com/aboutus/ourmines.aspx	
Coal Specifications	Proximate Analysis	Typical
	Btu/lb.	8,800
	Sulfur	0.4%
	Ash	5.3%
	Sodium as % of Ash	1.2%
Annual Production	Permitted for 50 million tons per year 2007 – 0 tons 2008 – 0 tons 2008 – 8.9 million tons	
Storage Capacity	105,000 tons total (7 silos)	
Loading & Weighing	Flood loading coupled with weigh-in-motion track scales and top-off system Two loading loops	
Track Configuration	Capable of holding 7 unit trains on site	

North Antelope Rochelle Mine - Peabody Energy

Page 14

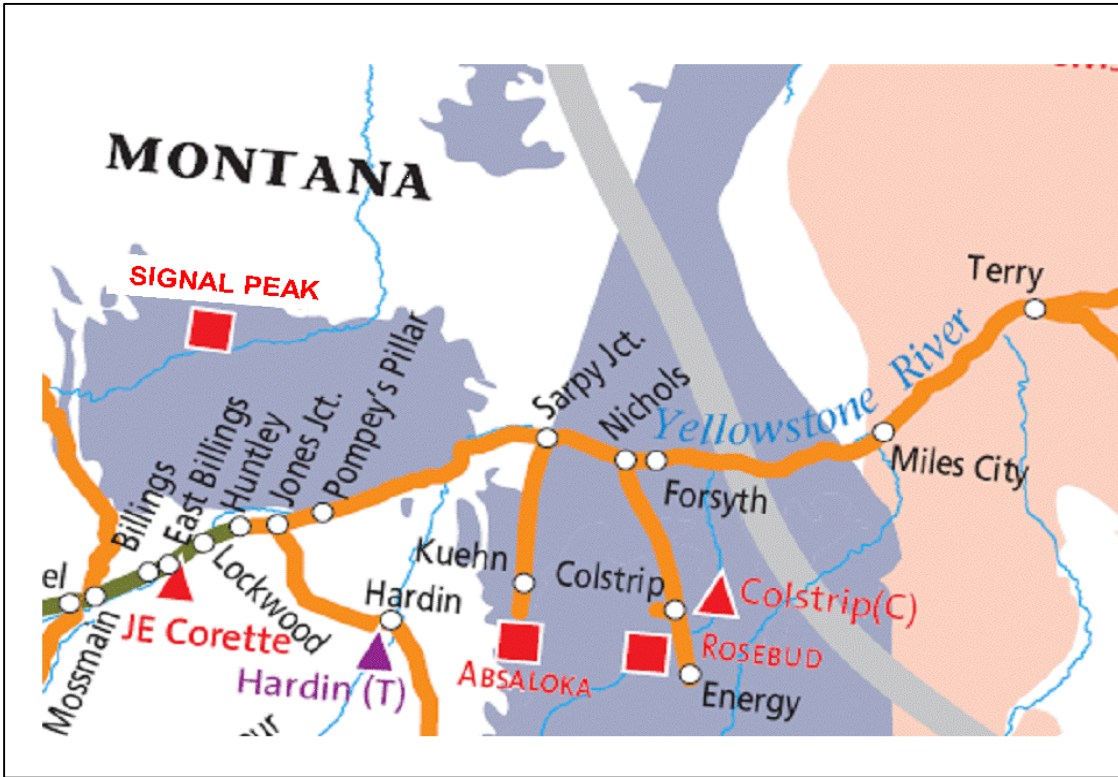
Type of Mine	Surface	
Loading Station	Nacco Jct., Wyoming (Campbell County) 60 miles south of Gillette, Wyoming	
Marketing Contact	http://www.PeabodyEnergy.com	
Coal Specifications	Proximate Analysis	Typical
	Btu/lb.	8,800
	Sulfur	0.21%
	Ash	4.6%
	Sodium as % of Ash	1.8%
Recoverable Reserves	1,245 million tons	
Annual Production	Permitted for 110 million tons per year	
	2007 – 91.5 million tons	
	2008 – 97.5 million tons	
	2009 – 98.3 million tons	
Storage Capacity	130,000 tons (5 silos, plus a slot storage)	
Loading & Weighing	Batch weigh bins coupled with weigh-in-motion track scales	
	Two loading loops	
Track Configuration	Capable of holding 10 unit trains on site	

Rawhide Mine - Peabody Energy

Type of Mine	Surface	
Loading Station	Rawhide Jct., Wyoming (Campbell County) 10 miles north of Gillette, Wyoming	
Marketing Contact	http://www.PeabodyEnergy.com	
Coal Specifications	Proximate Analysis	Typical
	Btu/lb.	8,300
	Sulfur	0.37%
	Ash	5.4%
	Sodium as % of Ash	1.6%
Recoverable Reserves	388 million tons	
Annual Production	Permitted for 24 million tons per year	
	2007 – 17.1 million tons	
	2008 – 18.4 million tons	
	2009 – 15.8 million tons	
Storage Capacity	78,000 tons total (6 silos plus surge silo)	
Loading & Weighing	Flood loading coupled with weigh-in-motion track scales and top-off system	
	Two loading loops, single top-off	
Track Configuration	Capable of holding 3 unit trains on site	

MONTANA

Montana leads the nation in compliance coal reserves with over 50 billion tons. It is the fifth largest coal producing state in the country.



Absaloka Mine - Westmoreland Coal Co.

Page 17

Type of Mine	Surface	
Loading Station	Kuehn, Montana (Big Horn County) 60 miles southwest of Forsyth, Montana	
Marketing Contact	http://www.westmoreland.com/coal.asp?topic=coal_overview	
Coal Specifications	Proximate Analysis	Typical
	Btu/lb.	8,750
	Sulfur	0.6%
	Ash	9.0%
	Sodium as % of Ash	2.0%
Recoverable Reserves	70 million tons	
Annual Production	Permitted for 7 million tons per year 2007 – 7.7 million tons 2008 – 6.4 million tons 2009 – 5.9 million tons	
Storage Capacity	44,000 tons (storage barn)	
Loading & Weighing	Flood loading and belt scale Single loading loop	
Track Configuration	Capable of holding 1 unit train on site, plus 1 on siding	

Decker Mine - Managed by Kiewit Mining Group

Page 18

Type of Mine	Surface	
Loading Station	Decker, Montana (Big Horn County) 23 miles northeast of Sheridan, Wyoming	
Marketing Contact	http://www.kiewit.com/districts/kiewit-mining-group/overview.aspx	
Coal Specifications	Proximate Analysis	Typical
	Btu/lb.	9,450
	Sulfur	0.4%
	Ash	4.2%
	Sodium as % of Ash	1.00-8.00%
Recoverable Reserves	200 million tons	
Annual Production	Permitted for 14 million tons per year 2007 – 6.8 million tons 2008 – 6.2 million tons 2009 – 4.5 million tons	
Storage Capacity	East: 122,000 tons total (silo and stockpile) West: 300,000 tons total (silo and stockpile)	
Loading & Weighing	East: Flood loading, belt scale West: Flood loading, belt scale	
Track Configuration	East: Capable of holding 1 unit train on site West: Capable of holding 1 unit train on site	
Information	Ownership: Rio Tinto Energy America and Level 3 Managed by Kiewit Mining	

Rosebud Mine - Westmoreland Coal Co.

Page 19

Type of Mine	Surface	
Loading Station	Colstrip, Montana (Rosebud County) 35 miles southwest of Forsyth, Montana	
Marketing Contact	http://www.westmoreland.com/coal.asp?topic=coal_overview	
Coal Specifications	Proximate Analysis	Typical
	Btu/lb.	8,750
	Sulfur	0.8%
	Ash	8.5%
	Sodium as % of Ash	0.3%
Recoverable Reserves	205 million tons	
Annual Production	Permitted for 14 million tons per year 2007 – 2.0 million tons (rail) 2008 – 1.9 million tons (rail) 2009 – 1.8 million tons (rail)	
Storage Capacity		
Loading & Weighing	Flood loading and belt scale Single loading loop	
Track Configuration	Capable of holding 1 unit train on site	

Signal Peak - Signal Peak Energy

Page 20

Type of Mine	Underground longwall / continuous miner development	
Loading Station	Signal Peak Energy Mine 35 miles north of Billings, MT	
Marketing Contact	Don Drabant (614) 221-0101 ddrabant@boich.com	
Coal Specifications	Proximate Analysis	As Received
	Btu/lb.	10,300
	Sulfur	0.55%
	Ash	7.0%
Recoverable Reserves	500 million tons	
Annual Production	Permitted for 14 million tons per year 2009 – 0.7 million tons	
Storage Capacity	800,000 tons	
Loading & Weighing	Batch weigh system Loop track 2 train capacity	
Track Configuration	Capable of holding 2 unit trains on site, plus 1 on siding	

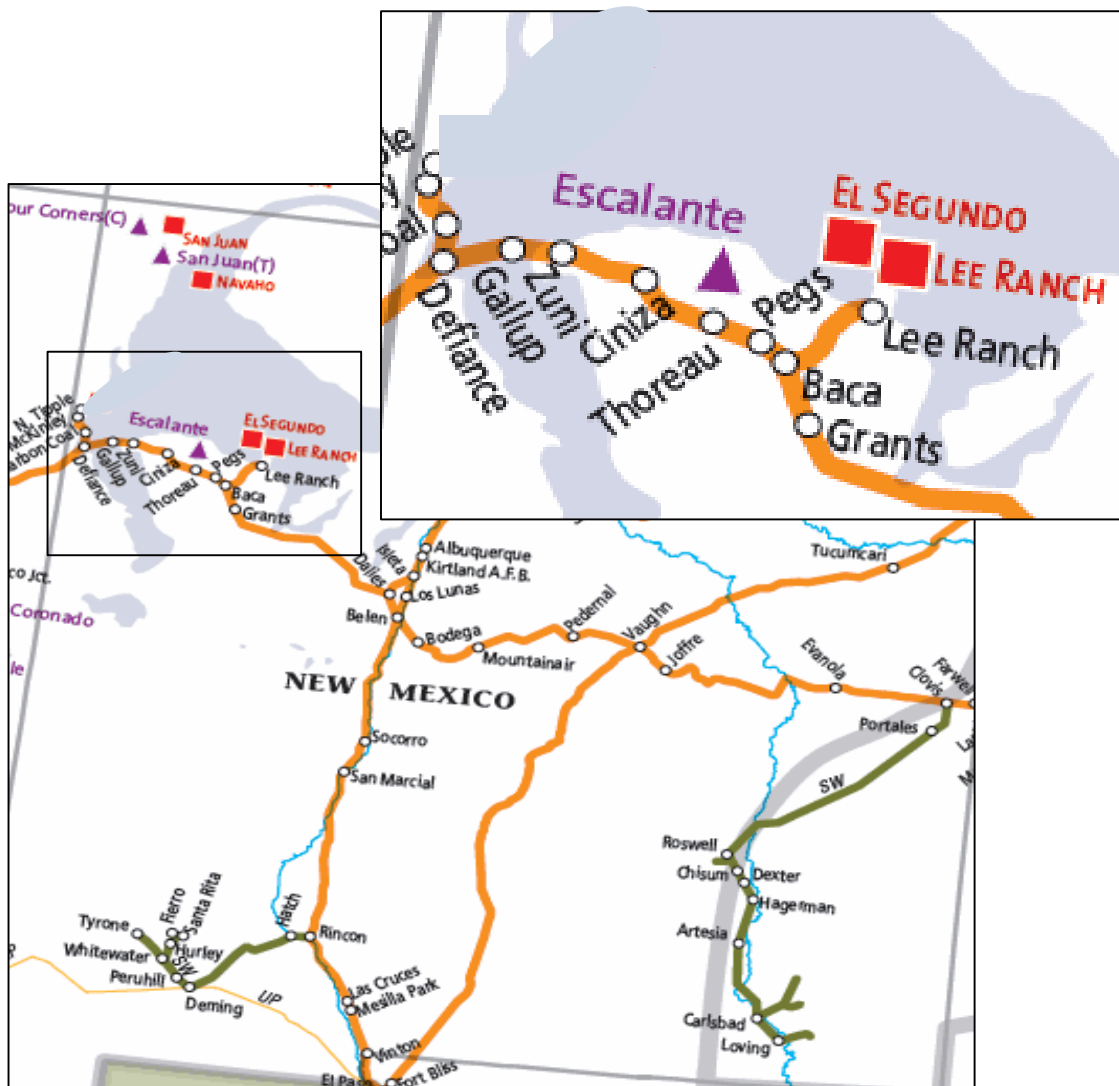
Spring Creek Mine - Cloud Peak Energy

Page 21

Type of Mine	Surface										
Loading Station	Nerco Jct., Montana (Big Horn County) 30 miles northeast of Sheridan, Wyoming										
Marketing Contact	http://www.cloudpeakenergy.com/										
Coal Specifications	<table border="1"><thead><tr><th>Proximate Analysis</th><th>Typical</th></tr></thead><tbody><tr><td>Btu/lb.</td><td>9,350</td></tr><tr><td>Sulfur</td><td>0.38%</td></tr><tr><td>Ash</td><td>4.1%</td></tr><tr><td>Sodium as % of Ash</td><td>8.2%</td></tr></tbody></table>	Proximate Analysis	Typical	Btu/lb.	9,350	Sulfur	0.38%	Ash	4.1%	Sodium as % of Ash	8.2%
Proximate Analysis	Typical										
Btu/lb.	9,350										
Sulfur	0.38%										
Ash	4.1%										
Sodium as % of Ash	8.2%										
Annual Production	Permitted for 22 million tons per year 2007 – 15.7 million tons 2008 – 17.9 million tons 2009 – 17.6 million tons										
Storage Capacity	35,000 tons (barn storage)										
Loading & Weighing	Batch weigh bin coupled with weigh-in-motion track scale Single loading loop										
Track Configuration	Capable of holding 3 unit trains on site, plus 1 on siding										

NEW MEXICO

BNSF serves the Raton Basin in northwest New Mexico. The high-quality coal deposits are characterized by high BTU, low-sulfur, low ash, and low moisture content.



Lee Ranch Mine - Peabody Energy

Page 23

Type of Mine	Surface	
Loading Station	Lee Ranch Jct., New Mexico (Cibola County) 35 miles north of Grants, New Mexico	
Marketing Contact	http://www.PeabodyEnergy.com	
Coal Specifications	Proximate Analysis	Typical
	Btu/lb.	9,230
	Sulfur	0.9%
	Ash	17.8%
	Sodium as % of Ash	0.4%
Recoverable Reserves	400 million tons	
Annual Production	Permitted for 7 million tons per year 2007 – 4.7 million tons 2008 – 2.3 million tons 2009 – 1.2 million tons	
Storage Capacity	45,000 tons total (three silos)	
Loading & Weighing	Batch weigh bin Single loop track	
Track Configuration	Capable of holding 1 unit train on loop, plus 1 on siding	

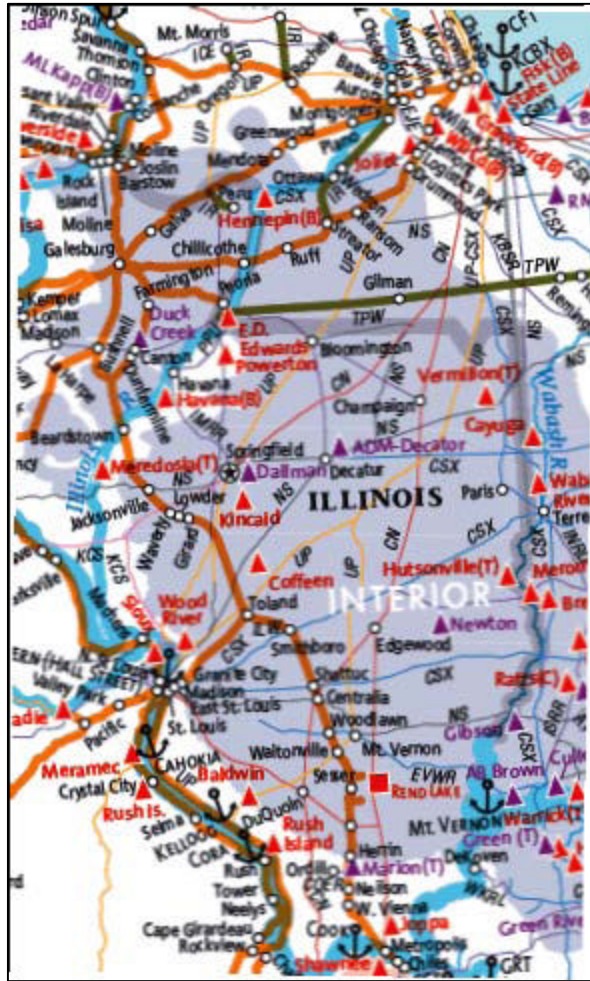
El Segundo Mine - Peabody Energy

Page 24

Type of Mine	Surface	
Loading Station	El Segundo Jct., New Mexico (Cibola County) 25 miles north of Grants, New Mexico	
Marketing Contact	http://www.PeabodyEnergy.com	
Coal Specifications	Proximate Analysis	Typical
	Btu/lb.	9,273
	Sulfur	0.99%
	Ash	15.50%
	Sodium as % of Ash	1.00%
Recoverable Reserves	176 million tons	
Annual Production	Permitted for 6 million tons per year 2008 – 2.5 million tons 2009 – 5.3 million tons	
Storage Capacity	65,000 tons total (three stacking tubes)	
Loading & Weighing	Batch weigh bin Single loop track	
Track Configuration	Capable of holding 1 unit train on site	

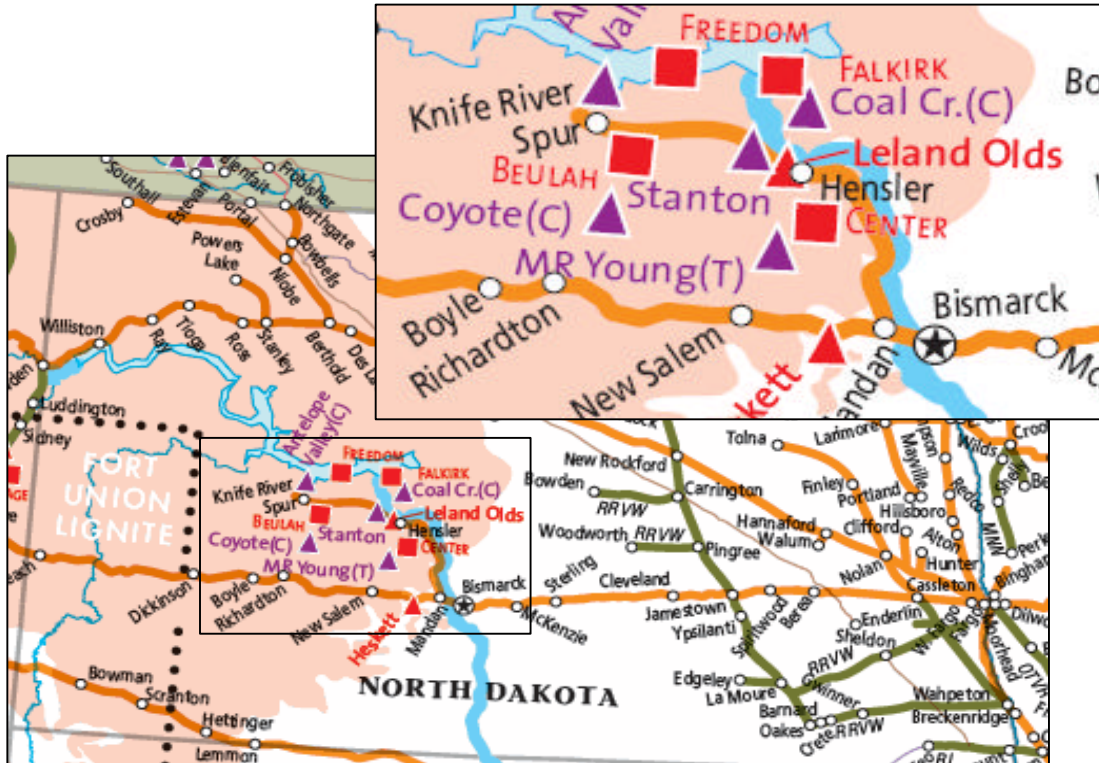
ILLINOIS

Illinois coal deposits are characterized by high BTU, mid-range sulfur, moderate ash, and low moisture content. Eastern coal-fired power plants often times blend high-BTU Illinois coal with low-sulfur western coal to optimize their coal burns. BNSF has access to Illinois mines through interchange with other railroads.



NORTH DAKOTA

Lignite is available from BNSF-served surface mines in North Dakota. This lignite field is part of the Great Plains coal area. Heat values of the deposits in this area range from 6,500 to 7,000 BTU/lb. The lignite is primarily burned by local power plants, but can be used by any properly designed stokers, coal-fired units and cyclone furnaces.



Beulah Mine - Resources Group / Knife River Coal Mining

Page 27

Type of Mine	Lignite surface	
Loading Station	Beulah Mine, North Dakota (Mercer County) 2 miles south of Beulah, North Dakota	
Marketing Contact	Phone: (701) 873-4333 / Fax: (701) 873-7784	
Coal Specifications	Proximate Analysis	Typical
	Btu/lb.	7,000
	Sulfur	0.9%
	Ash	6.5%
	Sodium as % of Ash	6.0%
Recoverable Reserves	83 million tons	
Annual Production	Permitted for 4.5 million tons/year 2007 – 3.0 million tons 2008 – 3.0 million tons 2009 -- 2.6 million tons	
Storage Capacity	30,000 tons	
Storage Recharge Rate	12,000 tons per day	
Loading & Weighing	Tipple with chutes to handle 1,600 tons per hour and second tipple capable of 750 tons per hour; weighing for rail movements is handled at BNSF Mandan Yard	
Track Configuration	Three load tracks, three empty tracks, run-around	
Information	Beulah Mine supplies lignite to an electric generating station adjacent to the mine as well as other markets via rail haul.	

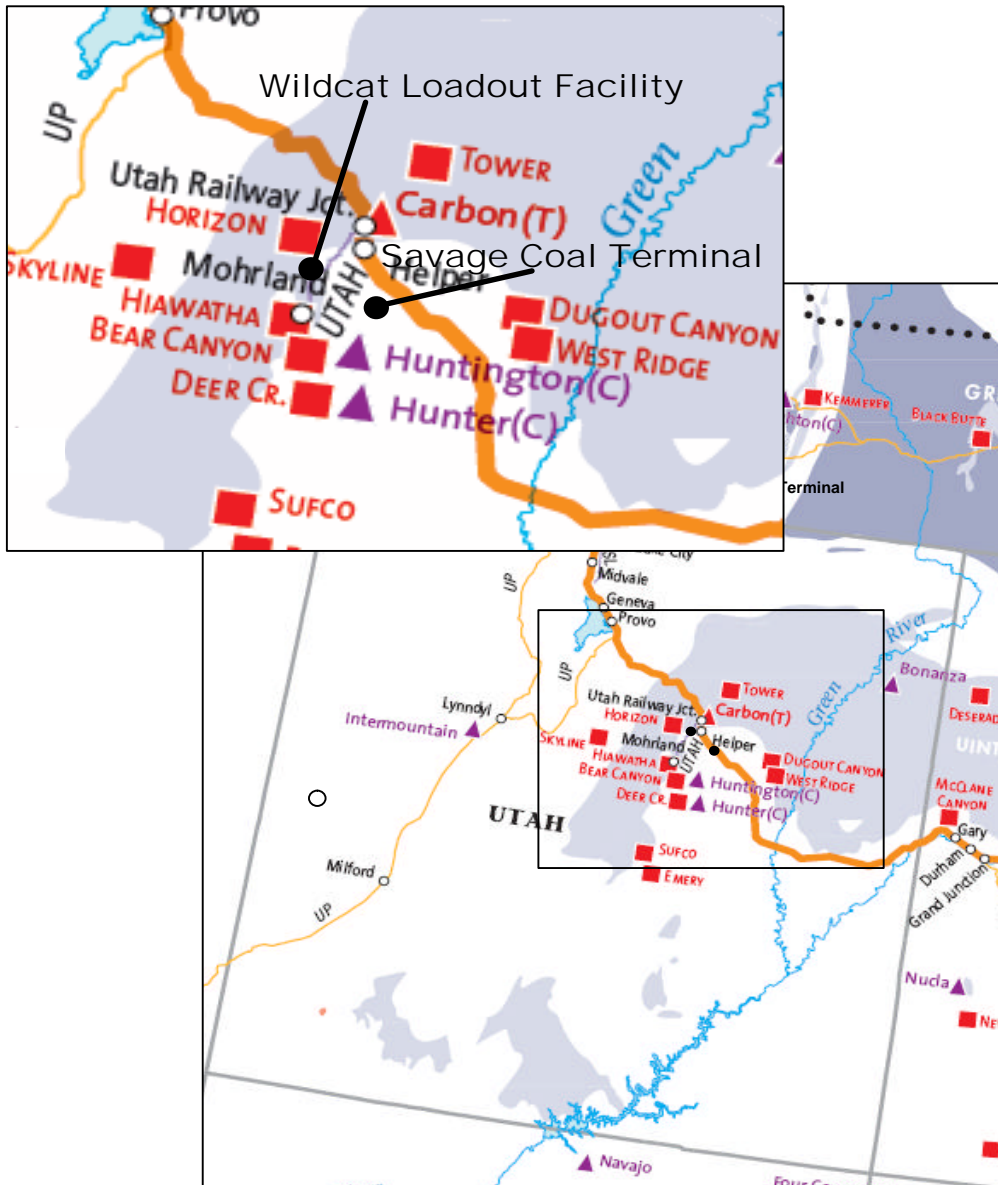
Freedom Mine - North American Coal / Coteau Properties

Page 28

Type of Mine	Lignite surface	
Loading Station	Antelope Valley, North Dakota 8 miles northwest of Beulah, North Dakota	
Marketing Contact	Phone: (701) 873-2281 / Fax: (701) 873-7226	
Coal Specifications	Proximate Analysis	Typical
	Btu/lb.	6,775
	Sulfur	0.7%
	Ash	7.2%
	Sodium as % of Ash	5.5%
Recoverable Reserves	550 million tons	
Annual Production	2007 – 15.0 million tons 2008 – 14.6 million tons 2009 – 15.0 million tons	
Storage Capacity	450,000 tons (two stockpiles)	
Loading & Weighing	Discharge belt to 50-car train	
Track Configuration	Single track holds 60 cars on site	
Information	Freedom Mine delivers lignite to two facilities via mine mouth conveyor and others via railroad	

UTAH

BNSF Railway has access to Utah coal mines through Utah Railway, a connecting carrier. Mines are accessed by Utah Railway through two loadout facilities, Wildcat and Savage Coal Terminal. Utah Railway interchanges coal trains with BNSF at Provo, Utah (westbound) and Grand Junction, Colorado (eastbound).



Bear Canyon -- Co-op Mining Company

Page 30

Type of Mine	Lignite surface	
Loading Station	Savage Coal Terminal, Utah (Carbon County) 6 miles southeast of Price, Utah	
Marketing Contact	E-mail ekingston@Qwest.net	
Coal Specifications	Proximate Analysis	Typical
	Btu/lb.	11,700
	Sulfur	0.6%
	Ash	12.0%
	Sodium as % of Ash	2.0%
Recoverable Reserves	50 million tons	
Annual Production	2007 – 0.6 million tons 2008 – 1.0 million tons 2009 – 0.6 million tons	
Storage Capacity	150,000 tons (stockpile at Railco on UP)	
Loading & Weighing	Savage: Flood loading with belt scale Single loading loop	
Track Configuration	Savage: Capable of holding 1 unit train on site	

Deer Creek Mine - PacifiCorp

Page 31

Type of Mine	Underground	
Loading Station	Savage Coal Terminal, Utah (Carbon County) 6 miles southeast of Price, Utah	
Marketing Contact	E-mail: Bret.Morgan@pacificorp.com	
Coal Specifications	Proximate Analysis	Typical
	Btu/lb.	11,900
	Sulfur	0.4%
	Ash	10.0%
	Sodium as % of Ash	2.5%
Recoverable Reserves	25 million tons	
Annual Production	2007 – 3.7 million tons 2008 – 3.8 million tons 2009 – 3.8 million tons	
Storage Capacity	150,000 tons (stockpile)	
Loading & Weighing	Flood loading with belt scale Single loading loop	
Track Configuration	Capable of holding 1 unit train on site	

Dugout Canon Mine - Arch Coal

Page 32

Type of Mine	Underground	
Loading Station	Savage Coal Terminal, Utah (Carbon County) 6 miles southeast of Price, Utah	
Marketing Contact	http://www.archcoal.com/aboutus/ourmines.aspx	
Coal Specifications	Proximate Analysis	Typical
	Btu/lb.	11,950
	Sulfur	0.6%
	Ash	10.0%
	Sodium as % of Ash	0.8%
Recoverable Reserves	68 million tons	
Annual Production	2007 – 3.8 million tons 2008 – 4.1 million tons 2009 – 3.3 million tons	
Storage Capacity	150,000 tons (stockpile)	
Loading & Weighing	Flood loading with belt scale Single loading loop	
Track Configuration	Capable of holding 1 unit train on site	

Horizon - America West Resources, Inc.

Type of Mine	Underground - Continuous Mining	
Loading Stations	Savage Coal Terminal in Price, Utah Wildcat Terminal in Price, Utah	
Marketing Contacts	http://www.americacoal.com	
	W.C. Travis	chuck.travis@americacoal.com
	Director	(801) 831-6017
	W.T. Graham	bill.graham@americacoal.com
	Director - Western Region & Intl	(650) 207-9145
Coal Specifications	Proximate Analysis	Typical (as received)
	Btu/lb.	12,000
	Sulfur	0.5%
	Ash	>10%
	Sodium as % of Ash	0.7%
Recoverable Reserves	20 million tons	
Annual Production	2007 -- 0.25 million tons 2008 -- 0.25 million tons 2009 -- 0.35 million tons	
Storage Capacity	Savage Coal Terminal: 150,000 tons Wildcat Terminal: 100,000 tons	
Loading & Weighing	Savage Terminal: Flood loading with belt scale Wildcat: Batch weigh bin	
Loading Rate	Savage Coal Terminal 5,000 Wildcat 5,000 tons/hour;	
Track Configuration	Savage Terminal: Loop Track holds 1 unit train Wildcat Terminal: Siding holds 1 unit train	

SUFco Mine -- Arch Coal

Page 34

Type of Mine	Underground
Loading Station	Savage Coal Terminal, Utah (Carbon County) 6 miles southeast of Price, Utah
Marketing Contact	http://www.archcoal.com/aboutus/ourmines.aspx
	Btu/lb. 11,400
	Sulfur 0.5%
	Ash 8.5%
	Sodium as % of Ash 3.5%
Recoverable Reserves	126 million tons
Annual Production	2007 – 6.7 million tons 2008 – 6.9 million tons 2009 – 6.7 million tons
Storage Capacity	150,000 tons (stockpile) 1,250 tons per hour
Loading & Weighing	Flood loading with belt scale Single loading loop
Track Configuration	Capable of holding 1 unit train on site

West Ridge Mine - Andalex Resources and Intermountain Power

Page 35

Type of Mine	Underground	
Loading Station	Savage Coal Terminal, Utah (Carbon County) 6 miles southeast of Price, Utah and Wild Cat, Utah (Carbon County)	
Marketing Contact	Phone: (801) 568-8900 / Fax: (801) 568-8930	
Coal Specifications	Proximate Analysis	Typical
	Btu/lb.	12,550
	Sulfur	1.2%
	Ash	8.5%
	Sodium as % of Ash	0.6%
Recoverable Reserves	50 million tons	
Annual Production	2007 – 4.3 million tons 2008 – 3.8 million tons 2009 – 3.1 million tons	
Storage Capacity	Wild Cat 100,000 tons; Savage Coal Terminal 150,000 tons	
Loading & Weighing	Wild Cat: Batch weigh bin Single loading loop Savage Coal Terminal: Flood loading with belt scale Single loading loop	
Track Configuration	Wild Cat: Capable of holding 1 unit train on site Savage Coal Terminal: Capable of holding 1 unit train on site	

MINE INDEX

Absaloka Mine <i>Montana</i>	17
Antelope Mine <i>Wyoming</i>	3
Bear Canyon #1 Mine <i>Utah</i>	30
Belle Ayr Mine <i>Wyoming</i>	4
Beulah Mine <i>North Dakota</i>	27
Black Thunder Mine <i>Wyoming</i>	5
Buckskin Mine <i>Wyoming</i>	6
Caballo Mine <i>Wyoming</i>	7
Clovis Point (loadout) <i>Wyoming</i>	8
Coal Creek Mine <i>Wyoming</i>	9
Cordero Rojo Mine <i>Wyoming</i>	10
Decker Mine <i>Montana</i>	18
Deer Creek Mine <i>Utah</i>	31
Dry Fork Mine <i>Wyoming</i>	11
Dugout Canyon Mine <i>Utah</i>	33
Eagle Butte Mine <i>Wyoming</i>	12
El Segundo Mine <i>New Mexico</i>	24
East Thunder Mine <i>Wyoming</i>	13
Freedom Mine <i>North Dakota</i>	28
Horizon Mine <i>Utah</i>	33
Lee Ranch Mine <i>New Mexico</i>	23
North Antelope Rochelle Mine <i>Wyoming</i>	14
Rawhide Mine <i>Wyoming</i>	15
Rosebud Mine <i>Montana</i>	19
Spring Creek Mine <i>Montana</i>	21
SUFCO Mine <i>Utah</i>	34
West Ridge Mine <i>Utah</i>	35

MINE OWNER INDEX

Alpha Natural Resources - Belle Aye, Eagle Butte.....	4,12
America West Resources, Inc - Horizon.....	34
Andalex Resources, Inc - West Ridge.....	36
Arch Coal - Black Thunder, Coal Creek.....	9
Chevron Mining - McKinley	24
Co-op Mining Company - Bear Canyon.....	31
Kiewit Mining Group - Buckskin.....	6
Level 3/RTEA - Decker.....	18
North American Coal Corp - Freedom.....	29
Pacificorp - Deer Creek.....	32
Peabody Energy - North Antelope Rochelle, Caballo, Rawhide, Lee Ranch, El Segundo.....	14,, 7, .15, .23, 25
Resources Group - Beulah.....	28
Cloud Peak Energy - Cordero Rojo, Antelope, Spring Creek.....	10,, 3, 21
Western Fuels Wyoming - Dry Fork.....	11
Westmoreland Coal - Abasloka, Rosebud.....	17
Wyodak Resources Development - Clovis Point loadout	8